

# ND POSTDOC NEWSLETTER

May 30, 2017

## In This Issue

- [Important Resources](#)
- [One-on-One Consultations](#)
- [National Postdoctoral Association](#)
- [Spotlight Jobs of the Week](#)
- [Positive Productivity Points](#)
- [GPS for Mind, Body & Soul](#)
- [Postdoc Corner](#)
- [Career Services](#)
- [Events and Workshops](#)
- [Funding Opportunities](#)
- [Professional Development](#)
- [PhD Humor](#)

## Quick Links

[Past Postdoc Newsletters](#)

[ND Postdoc Website](#)

[ND Resources](#)

[Community Links](#)

[Job Search Sites](#)

[ND Human Resources](#)

[Parking Shuttle Schedule](#)

[Faculty-Staff Classifieds](#)

[One Button Studio](#)

## Important Resources

### Monthly Postdoc Open Forum

Come meet Valli, Associate Program Director of the Postdoc Office, to ask questions about professional development, career exploration, and other services offered by the Postdoc Office in particular and Notre Dame as a whole. International scholars are also welcome to discuss matters specific to them.

## Postdoc Corner

### Lasting Impressions from the 15th NPA Annual Meeting

By Tiewei "Leo" Cheng, Kerry Kauffman, and Jennifer Lamberts for [The POSTDOcket](#)

More than 430 postdoctoral scholars, postdoctoral administrators, faculty, and stakeholders gathered for a lively and engaging 15th NPA Annual Meeting, held March 17-19, 2017.



Click [here](#) to read more about the events of the Annual NPA Meeting!

[back to top](#)

### Faculty recognized for excellence in student engagement and advising

Twenty University of Notre Dame faculty members have received [Rev. Edmund P. Joyce, C.S.C., Awards for Excellence in Undergraduate Teaching](#), and three have been honored with [Dockweiler Awards for Excellence in Undergraduate Advising](#).



Many of these faculty members were once postdocs themselves—click [here](#) to read about them!

[back to top](#)

***The ND Postdoc Newsletter wants to share your research or article you have written with the ND Postdoc Community. If you would like to submit an article for the newsletter, please***

**Date:** Thursday, June 1st  
**Time:** 2 - 4 pm  
**Location:** McCourtney 206

**Date:** Wednesday, June 14th  
**Time:** 11 am - 1 pm  
**Location:** Hesburgh 312

**Date:** Thursday, June 15th  
**Time:** 2 - 4 pm  
**Location:** Stinson Remick 100

## One-on-One Consultations



Do you need assistance with...

- Career counseling
- Plan and define career goals
- Explore career options
- Identify strengths and weakness and plan for skills development
- CV, resume or cover Letter feedback
- LinkedIn/Google scholar profile
- Prepare for upcoming interviews

Contact [Valli Sarveswaran](#) to schedule a one-on-one consultation.

## International Postdocs



- [English for Academic Purposes](#)
- [ESL Classes for Spouses](#)
- [ESL Classes for Staff](#)
- [J1 Scholar Information](#)
- [Last Payment Process](#)
- [Living in the United States](#)
- [ND International - Upcoming Events](#)
- [Tax Assistance Program](#)
- [Temporary Protected Status](#)

## ND Calendar & Events

For a full listing of events on the Notre Dame campus for this week click [here](#).

[back to top](#)

## Academic iNdex



[email Valli Sarveswaran.](#)

## Career Services

### Using Job Ads for Career Exploration

By Derek Attig for [Carpe Careers](#)

When it comes to careers, we tend to pay attention to what's right in front of us. And for most graduate students, that means academe.



How do you imagine or examine alternatives to academic careers? How do you explore jobs that no one you know works in, jobs that you maybe haven't even heard of yet?

Click [here](#) to learn more!

### From Bench Science to Academic Administration

By Viviane Callier for [Chronicle Vitae](#)

Plenty of science Ph.D.s wind up in nonacademic careers. Click [here](#) to read more about Dr. Layton's career path from the lab to academic administration.



[back to top](#)

## Events and Workshops

### World on Tap

All postdocs are invited to World on Tap, a social at Rohr's held every first Wednesday of the month. Free appetizers will be served, and the first 50 attendees will receive a free drink ticket valued up to \$6. Please bring a valid photo ID to this event.



- Date: June 7, 2017
- Time: 5:00 PM - 6:00 PM
- Location: Rohr's at the Morris Inn ([map](#))

[back to top](#)

### Summer Course Offerings from the Writing Center

#### **SCIENTIFIC WRITING (GRED 60500)**

WHAT: Scientific Writing, 2-credit graduate course in scientific and technical writing



# Academic iNDEX

- A secure, easily accessible, online repository for your academic and professional information
- An index of your publications, presentations, grants, work history, and other academic achievements
- A resource for identifying scholars eligible for specific grant and fellowship opportunities
- A tool to quickly create personalized CVs, resume, lists of publication or presentations, and more

For more information about Academic iNDEX and how to use it, click [here](#).

[back to top](#)

## **National Postdoctoral Association (NPA)**



The NPA is a member-driven organization that provides a unique, national voice for postdoctoral scholars. Since 2003, they have taken on the ambitious agenda to enhance the quality of the postdoctoral experience in the US. They have assumed a leadership role in addressing the many issues confronting the postdoctoral community that are national in scope and requiring action beyond the local level.

- The University of Notre Dame is a sustaining member of the NPA.
- ND Postdocs can join the NPA for **free**.
- Learn about the benefits of a NPA membership [here](#).

For more information about the NPA and to become a member, click [here](#).

[back to top](#)

## **Notre Dame Graduate Student, Spouse, and Significant Other Network (GSN)**



- The Graduate Student Union (GSU) is accepting postdocs as members in the Graduate Student, Spouse and Significant Other Network (GSN).

DATES: June 19-July 28

TIMES:

- Section 01: Tuesday, 1:00-3:05 p.m. and Thursday, 1:00-3:05 p.m.
- Section 02: Tuesday, 1:00-3:05 p.m. and Thursday, 10:30-12:35 p.m.

This course offers graduate students in the sciences and engineering a focused study of the conventions of scientific writing and fosters a clearer understanding of what constitutes good writing in these fields.

## **TEACHING WITH WRITING (GRED 60615)**

WHAT: Teaching With Writing, 2-credit graduate course in the teaching of writing in your discipline

DATES: June 5-16

TIME: Monday-Friday, 9:00am - 11:30am

INSTRUCTOR: Matthew Capdevielle, Ph.D., Director of the [University Writing Center](#)

This course is for graduate students, postdoctoral scholars, and faculty looking to enhance their teaching by honing their skills as teachers of writing in their home disciplines.

Register for these courses [here](#).

[back to top](#)

## **Professional Development**

### **Join the Notre Dame Postdoc LinkedIn Group!**

The Notre Dame Office for Postdoctoral Scholars has created a special LinkedIn group for all ND postdocs, graduate students, and faculty to share professional information.



To join the group, click [here](#) and then click "Ask to Join".

Make sure to update your profile, profile picture, and check notification settings. If you need help creating or optimizing your LinkedIn profile, please contact [Valli](#). [back to top](#)

### **Hesburgh Libraries Workshops**



The Hesburgh Libraries and Center for Digital Scholarship workshops are offered to all ND Postdocs.

### **Hesburgh Libraries Workshops**

- Register: <http://library.nd.edu/about/workshops.shtml>
- Click [here](#) for this week's list of workshops.

- The goal of this group is to act as a sustainable support system and social networking community for the significant others of all graduate students/postdocs and their partners, and to facilitate the involvement in the Notre Dame and South Bend communities.

For more information about the GSN and how to get involved, visit [their Facebook page](#).

[back to top](#)

## Spotlight Jobs of the Week

### Engineering

- [Assistant Professor, Electrical Engineering](#)
- [Research Engineer \(Path Planning\)](#)

### Humanities

- [Assistant Professor, History](#)
- [Digital Humanities Specialist](#)

### Business

- [Assistant Professor, Economics](#)
- [Management Consultant](#)

### Science

- [Assistant Professor, Biology](#)
- [Postdoctoral Research Scientist](#)

### Social Science

- [Behavioral Health Clinician](#)
- [Statistician- United Nations Conference on Trade & Development](#)

[back to top](#)

## Positive Productivity Points



[6 Productivity Hacks for When You're Feeling Least Motivated](#)

From [Verily Magazine](#)

[back to top](#)

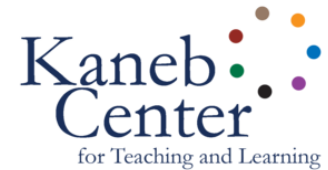
## GPS for Mind, Body & Soul

Library Workshop  
Calendar: [nd.libcal.com/calendar/allworkshops](http://nd.libcal.com/calendar/allworkshops)  
Questions? [cgs@nd.edu](mailto:cds@nd.edu)

[back to top](#)

## Kaneb Center Workshops

The Kaneb Center supports graduate students and postdocs in the pursuit of teaching excellence by stimulating scholarly reflection and conversation about teaching, and encouraging the adoption of practices that enhance learning.



For more information on Kaneb Center workshops and other events, please click [here](#).

[back to top](#)

## Center for the Study of Languages and Cultures



The Center for the Study of Languages and Cultures' English for Academic Purposes program offers workshops that are open to all ND Postdocs and their spouses. The center helps postdocs & their spouses develop their writing, conversational, and speaking skills.

Visit the center's [website](#) for more information on [tutoring and consultations](#) and [workshop registration](#).  
Questions? Contact [Lisa Joy Oglesbee](#)

[back to top](#)

## Workshops from the Writing Center

*Use Writing to Teach Critical Thinking*

The University Writing Center is pleased to offer consultations with instructors who want help designing and integrating writing assignments into their courses. We welcome instructors from every discipline, especially STEM subjects. Email [writing@nd.edu](mailto:writing@nd.edu) with the subject "Teaching Consultation" to set up a meeting!



[back to top](#)



## Workshops from the NCFDD

The National Center for Faculty Development and Diversity is an independent professional development, training and





### [How to Meal Prep for the Week in Just 90 Minutes](#)

From [Well + Good](#)

[back to top](#)

## Funding Opportunities

**For professional assistance in applying for competitive external funding opportunities, email Notre Dame's [Office of Grants and Fellowships](#).**

### Eppendorf & Science Prize for Neurobiology

The international Eppendorf & Science Prize for Neurobiology is awarded annually to one young scientist for the most outstanding neurobiological research based on methods of molecular and cell biology.



Deadline: June 15, 2017

Click [here](#) for more information.

[back to top](#)

### Agriculture and Food Research Initiative Pre/Postdoctoral Fellowships

**Deadline:** June 21, 17  
2 years of funding for US Citizen or Perm Residents  
Click [here](#) for more information.



[back to top](#)

### Science & SciLifeLab Prize for Young Scientists

Read further if you have earned a PhD between January 1, 2015 and December 31, 2016 in the following categories.



**Categories:** Cell and Molecular Biology, Genomics and Proteomics, Ecology and Environment, Translational Medicine  
**Prize money:** US\$30,000 for the grand prize

mentoring community of over 71,000 graduate students, postdocs, and faculty members. The NCFDD is 100% dedicated to supporting academics in making successful transitions throughout their careers. They offer on-campus workshops, professional development training, and intensive mentoring programs.

The University of Notre Dame is an institutional member of the NCFDD. Through Notre Dame's membership, ND Postdocs may claim an Institutional Sub-account Membership at no cost and enjoy all the benefits of a NCFDD Individual Membership. Register [here](#) to join. For a list of NCFDD 2017 webinars, click [here](#).

[back to top](#)

## PhD Humor



Courtesy of [PhD Comics](#)

[back to top](#)

winner, US\$10,000 for each of the category winners.

**Deadline:** July 15, 2017

Click [here](#) for more information.

[back to top](#)

## **2018-19 Fulbright Postdoctoral Scholar Awards**

Fulbright Postdoctoral Scholar Awards are open to U.S. scholars in STEM fields, the arts, humanities and social sciences who have recently completed their doctoral degree within the five previous years.



Deadline: August 1, 2017

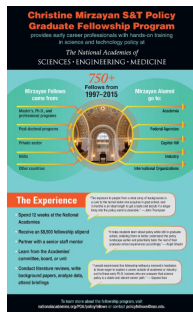
Click [here](#) for further details. Postdoctoral scholars who consider applying for the above award can contact the [Office of Grants and Fellowships](#). The Institute of International Education listed Notre Dame as one of the top-producing institutions for the 2015-2016 Fulbright U.S. Student Program competition.

[back to top](#)

## **Mirzayan Fellowship Program**

The Mirzayan Fellowship Program is now accepting applications for the 2018 session. Postdocs are eligible to apply

**Deadline:** September 8, 2017  
Click [here](#) for more information.



[back to top](#)

## **Social Media**



[ND Postdoc Facebook Group](#)

[@NDPostdocs](#)

[back to top](#)



Office for Postdoctoral Scholars

Disclaimer:

The views and opinions expressed in the media, articles, and comments included in this newsletter are solely the views and expressions of the original sources' authors and contributors, and do not necessarily represent those of the University of Notre Dame, The Graduate School, or the Office for Postdoctoral Scholars.