

# ND POSTDOC NEWSLETTER

August 22, 2017

## In This Issue

- [Important Resources](#)
- [One-on-One Consultations](#)
- [National Postdoctoral Association](#)
- [Spotlight Jobs of the Week](#)
- [Positive Productivity Points](#)
- [GPS for Mind, Body & Soul](#)
- [Postdoc Corner](#)
- [Career Services](#)
- [Events and Workshops](#)
- [Funding Opportunities](#)
- [Professional Development](#)
- [PhD Humor](#)

## Quick Links

[Past Postdoc Newsletters](#)

[ND Postdoc Website](#)

[ND Resources](#)

[Community Links](#)

[Job Search Sites](#)

[ND Human Resources](#)

[Parking Shuttle Schedule](#)

[Faculty-Staff Classifieds](#)

[One Button Studio](#)

## Important Resources

### Monthly Postdoc Open Forum

Come meet Valli, Associate Program Director of the Postdoc Office, to ask questions about professional development, career exploration, and other services offered by the Postdoc Office in particular and Notre Dame as a whole. International scholars are also welcome to discuss matters specific to them.

## Postdoc Corner

### Postdoc to Tenure Track Faculty

Dr. Tara D. Hudson is joining the Higher Education Administration program at Kent State University's School of Foundations, Leadership and Administration this fall as an assistant professor. Tara was previously the postdoctoral research associate at the Center for Social



Dr. Tara D. Hudson

Concerns at Notre Dame from 2015-2017. She received her Ph.D. in Educational Research and Policy Analysis with a concentration in higher education from North Carolina State University. Her dissertation research, which received the 2015 Bobby Wright Dissertation of the Year award from the Association for the Study of Higher Education (ASHE), examined how college students develop and sustain interracial friendships, with the aim of informing educational practice to better support students' achievement of the critical learning and development outcomes that result from diverse peer interactions and relationships. Her research focuses on two broad areas: (1) college students' prosocial development, particularly resulting from community engagement and interactional diversity; and (2) the experiences of underrepresented and marginalized populations along their educational and career trajectories.

Uniting these two areas is her desire to inform educational practice that advances higher education's role in promoting social justice and equity within U.S. society. In researching these topics, she employs both qualitative and quantitative methods. Dr. Hudson's research has been published in the *Journal of Higher Education*, *Review of Higher Education*, and *Journal of College and Character*, and she is co-author of a forthcoming chapter in the book *The Landscape of Postdoctoral Fellows: The Invisible Scholars* (eds. A. J. Jaeger & A. J. Dinin, Elsevier Academic

**Date:** Thursday, September 7th  
**Time:** 2 - 4 pm  
**Location:** McCourtney 206

**Date:** Thursday, September 21st  
**Time:** 2 - 4 pm  
**Location:** Stinson Remick 100

## One-on-One Consultations



Do you need assistance with...

- Career counseling
- Planning and defining career goals
- Exploring career options
- Identifying strengths and weakness and plan for skills development
- CV, resume or cover Letter feedback
- LinkedIn/Google scholar profile
- Preparing for upcoming interviews

Contact [Valli Sarveswaran](#) to schedule a one-on-one consultation.

## International Postdocs



- [English for Academic Purposes](#)
- [ESL Classes for Spouses](#)
- [ESL Classes for Staff](#)
- [J1 Scholar Information](#)
- [Last Payment Process](#)
- [Living in the United States](#)
- [ND International - Upcoming Events](#)
- [Tax Assistance Program](#)
- [Temporary Protected Status](#)

## ND Calendar & Events



Press).

[back to top](#)

## Notre Dame Research Funding Reaches Record-Breaking Levels

By Joanne Fahey and Brandi Klingerman for [Notre Dame News](#)

The University of Notre Dame has received \$138.1 million in research funding for fiscal year (FY) 2017, surpassing the previous record of \$133.7 million set in FY 2015. Click [here](#) to read more about the wonderful research initiatives supported by these awards!



[back to top](#)

***The ND Postdoc Newsletter wants to share your research or article you have written with the ND Postdoc Community. If you would like to submit an article for the newsletter, please email [Valli Sarveswaran](#).***

## Career Services

### Having a Life Beyond Your Research Projects

By David A. McDonald for [Inside Higher Ed](#)

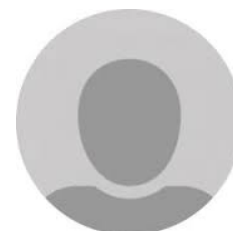
If you allow it to take over, you will be missing crucial aspects of the world outside your office, lab or library, warns David A. McDonald. Click [here](#) to read more!



## Events and Workshops

### FREE Professional Head Shots for Postdocs!

The Office for Postdoctoral Scholars is offering FREE professional head shots for postdocs who have't used this service for the last 12 months. Walk-In Opportunity: No appointment necessary. Attire: Business formal. Dress for success!



Dates

For a full listing of events on the Notre Dame campus for this week click [here](#).

[back to top](#)

## **Academic iNDex**



A secure and easily accessible online repository for your academic and professional information, where you can upload your CV publications, presentations, grants, work history, and other academic achievements.

For more information about Academic iNDex and how to use it, click [here](#).

[back to top](#)

## **National Postdoctoral Association (NPA)**



The University of Notre Dame is a sustaining member of the NPA. ND Postdocs can join the NPA for **free**. Learn about the benefits of a NPA membership [here](#).

[back to top](#)

## **Notre Dame Graduate Student, Spouse, and Significant Other Network (GSN)**



The Graduate Student Union (GSU) is accepting postdocs as members in the Graduate Student, Spouse and Significant Other Network (GSN). For more information about the GSN and how to get involved, visit [their Facebook page](#).

[back to top](#)

## **Spotlight Jobs of the Week**

### **Engineering**

- [Assistant/Associate Professor](#)
- [Mechanical Engineering Manager](#)

### **Humanities**

- [Assistant Professor of Military History](#)

- Wednesday, August 23 - 4 - 7 pm
- Thursday, August 24 - 4 - 7 pm
- Friday, August 25 - 9 am - 12 pm

### **Location**

- Jordan Hall of Science (Usually by the North Entrance/Lobby)

[back to top](#)

## **World on Tap**

International postdocs and friends are invited to World on Tap, a monthly social sponsored by Notre Dame International. Join us on first Wednesdays for community and free appetizers; the first 50 attendees will receive a free drink ticket valued up to \$6. Please bring a valid photo ID.



- Date: September 6, 2017
- Time: 5:00 PM - 6:00 PM
- Location: Rohr's at the Morris Inn ([map](#))

[back to top](#)

## **How to Effectively Cope with Stress During the Postdoc Years**



Office for Postdoctoral Scholars

The postdoc years are an exciting time to further your career and develop your professional identity, but they can also be filled with a number of stressors. Going on the job market, moving to a new town (or even country), balancing work and personal life, finances, and the uncertainty of what lies ahead can make the postdoc years an especially stressful time. This informational session will cover how to identify common signs of stress and how to effectively cope with times of stress and uncertainty using evidence-based strategies. We all are likely to experience the stress of the postdoc years at one time or another, and we hope this informational session will help start this important conversation about stress in academia and provide you with the resources to help you be successful.

- **Presenter:** Prof. Jennifer Hames, Psychology
- **Date:** September 14, 2017
- **Time:** 12:00 PM - 1:00 PM
- **Location:** 119 O'Shaughnessy Hall

Please click [here](#) to register.

[back to top](#)

## **Career Development Grants for Pre- and Postdocs**

- [Assistant Professor of Military History](#)
- [Writing Center Director](#)

## Business

- [Assistant/Associate Professor of Management](#)
- [Model Risk Manager \(PhD\) Structured Finance](#)

## Science

- [Assistant/Associate Professor, Statistics](#)
- [Senior Analytical Scientist](#)

## Social Science

- [Assistant Professor of Sociology](#)
- [Care Manager](#)

## Multidisciplinary

- [Director - iBiology](#)
- [Review Editor](#)
- [Director, Governmental Relations, Adhesives](#)

[back to top](#)

## Positive Productivity Points

[This Is How Disclarity Is Killing Your Productivity](#)

From [Forbes](#)

[back to top](#)

## GPS for Mind, Body & Soul

[The Best Time to Eat](#)

From [Shape](#)

[back to top](#)

## Funding Opportunities

***For professional assistance in applying for competitive external funding opportunities, email Notre Dame's [Office of Grants and Fellowships](#).***

## Applications to NIH Loan Repayment Programs Open Soon

The NIH Loan Repayment Programs (LRPs) are a set of programs established by Congress and designed to recruit and retain highly qualified health professionals into biomedical or biobehavioral research careers. Check the following links for more information.



[National Postdoctoral Association](#)



The Graduate School  
Office for Postdoctoral Scholars  
Notre Dame Research

Notre Dame Research and the Graduate School offer a grant-writing workshop for postdoctoral researchers at Notre Dame.

- Date: September 15, 2017
- Time: 9:00 AM - 4:00 PM
- Location: McCourtney Hall B01

All departments and disciplines are encouraged to attend where the following topics will be addressed.

- Writing successful grants
- Career development grants for pre- and postdocs
- Understanding the pre-award process
- Proposal reviews

Please click [here](#) to register.

[back to top](#)

## National Postdocs Appreciation Week

### Monday, Sept. 18

- NPAW Kickoff Event with breakfast
- 9:30 am to 11:30 am
- Venue TBD



### Tuesday, Sept. 19

- Immigration and employment options - presented by an immigration lawyer
- 5:00 pm to 7:00 pm
- Montgomery Hall, LaFortune Student Center
- Click [here](#) to register

### Wednesday, Sept. 20

- National Center for Faculty Development & Diversity (NCFDD) explained -by Prof. Amy Hixon
- 12:00 pm to 1:30 pm
- Fitzpatrick Hall 258
- Click [here](#) to register

### Thursday, Sept. 21

- Postdoc etiquette dinner
- 5:30 pm to 7:30 pm
- IEI-Visitation Hall 210, Remick Commons
- Click [here](#) to register

### Friday, Sept. 22

- Ice cream social
- 3:30 pm to 5:30 pm
- Venue TBD

**\*\*Every event you attend during the NPAW, you will be able to enter your name into drawings for Notre Dame Football Tickets. Five lucky winners will win a pair of tickets for Notre Dame football home games. Drawing will be held on Friday, September 22nd at 4 pm during**

[back to top](#)

## **Mirzayan Fellowship Program**

**Deadline:** September 8, 2017  
Click [here](#) for more information.

[back to top](#)

## **Social Media**

[ND Postdoc LinkedIn Group](#)

[ND Postdoc Facebook Group](#)

[@NDPostdocs](#)

[back to top](#)

[back to top](#)

## **Professional Development**

### **Join the Notre Dame Postdoc LinkedIn Group!**

The Notre Dame Office for Postdoctoral Scholars has created a special LinkedIn group for all ND postdocs, graduate students, and faculty to share professional information.



To join the group, click [here](#) and then click "Ask to Join." Make sure to update your profile, profile picture, and check notification settings. If you need help creating or optimizing your LinkedIn profile, please contact [Valli](#).

[back to top](#)

### **Hesburgh Libraries Workshops**



The Hesburgh Libraries and Center for Digital Scholarship workshops are offered to all ND Postdocs.

#### **Hesburgh Libraries Workshops**

- Register: <http://library.nd.edu/about/workshops.shtml>
- Click [here](#) for this week's list of workshops.

Library Workshop  
Calendar: [nd.libcal.com/calendar/allworkshops](http://nd.libcal.com/calendar/allworkshops)  
Questions? [cds@nd.edu](mailto:cds@nd.edu)

[back to top](#)

### **Kaneb Center Workshops**

The Kaneb Center supports graduate students and postdocs in the pursuit of teaching excellence by stimulating scholarly reflection and conversation about teaching, and encouraging the adoption of practices that enhance learning.



For more information on Kaneb Center workshops and other events, please click [here](#).

[back to top](#)





The Center for the Study of Languages and Cultures' English for Academic Purposes program offers workshops that are open to all ND Postdocs and their spouses. The center helps postdocs & their spouses develop their writing, conversational, and speaking skills.

Visit the center's [website](#) for more information on [tutoring and consultations](#) and [workshop registration](#).  
Questions? Contact [Lisa Joy Oglesbee](#)

[back to top](#)

## **Workshops from the Writing Center**

*Use Writing to Teach Critical Thinking*



The University Writing Center is pleased to offer consultations with instructors who want help designing and integrating writing assignments into their courses. We welcome instructors from every discipline, especially STEM subjects. Email [writing@nd.edu](mailto:writing@nd.edu) with the subject "Teaching Consultation" to set up a meeting!

[back to top](#)



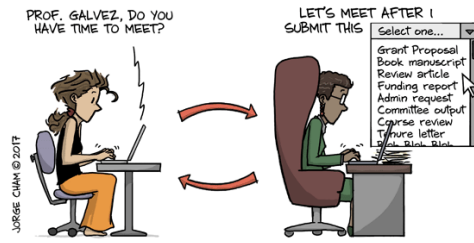
## **Workshops from the NCFDD**

The National Center for Faculty Development and Diversity is an independent professional development, training and mentoring community of over 71,000 graduate students, postdocs, and faculty members. They offer on-campus workshops, professional development training, and intensive mentoring programs.

The University of Notre Dame is an institutional member of the NCFDD. Through Notre Dame's membership, ND Postdocs may claim an Institutional Sub-account Membership at no cost and enjoy all the benefits of a NCFDD Individual Membership. Register [here](#) to join. For a list of NCFDD 2017 webinars, click [here](#).

[back to top](#)

**PhD Humor**



WHY YOU NEVER MEET.

WWW.PHDCOMICS.COM

Courtesy of [PHD Comics](http://www.phdcomics.com)

[back to top](#)



Office for Postdoctoral Scholars

Disclaimer:

The views and opinions expressed in the media, articles, and comments included in this newsletter are solely the views and expressions of the original sources' authors and contributors, and do not necessarily represent those of the University of Notre Dame, The Graduate School, or the Office for Postdoctoral Scholars.